

SUSTAINABILITY MENU

Sustainability has been in our DNA from the start. In order to harmonize our efforts and take the next step, we have identified four topics that we will focus on the coming years. This menu can be your one-stop-shop for the sustainability journey of your park. Each initiative contributes to at least one of the impact areas.

Enjoy your meal and ask, if you have any question!

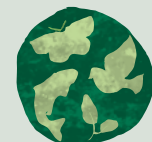
NB. Please find the digital version with [active links](#)!

Your Landal Sustainability team



ENERGY

One of our biggest impact is our energy consumption. We need to emit less CO₂ and play our part in stopping climate change. By switching from fossil to renewable sources of energy, reducing our energy demand and generating energy ourselves, we contribute to the Paris Climate Agreement.



BIODIVERSITY

Nature has been very good to us and therefore we need to be good for nature. Our parks are amidst of nature and part of who we are. By taking action at all our parks to not only accommodate guests, but animals, plants and insects too, we contribute to the resilience of our natural environment. Without nature, no Landal GreenParks, therefore we team up with mother nature!



EDUCATION

We did not inherit the world from our parents, we've just borrowed it from our children. By informing our guests, our employees, our partners and the children on our parks about the importance of sustainability, we foster lasting change for the future. We educate and provide an action perspective to everyone we interact with, so we can walk the talk together.

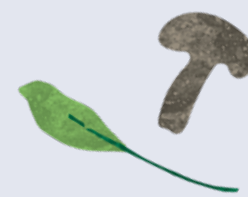


WASTE

We live on a finite world with finite resources and that means that we should think twice before throwing things away. In case we do throw things away, we need to make sure we retain as much value as possible. Therefore we need to try, together with our guests, maintenance departments and F&B outlets, to generate less waste and recycle it.



DESSERTS



OWL BOXES AND BIRD HOUSES

By placing boxes for owls and birdhouses you have a natural pest control service. For singing birds (oak) caterpillars are on the menu. Accommodating owls makes life tough for mice and rats. Besides cost savings, you can offer night safari (owls) or get free whistle concerts. That's what some extra biodiversity does for you!



- Reduce nuisance of mice and oak caterpillars
- Edutainment for our guests
- Improves biodiversity

[More info](#)

From € 15 / piece



FOOD (WASTE) WORKSHOP

Creating awareness about food waste is the very first step to changing behavior. Via this workshop your staff is made familiar with tips & tricks to reduce food waste. From process analysis to detailed waste management measurements.



- Saves money
- Enhances employee awareness

[More info](#)

Prices on request



FOODBANK / TOO GOOD TO GO (COMBINATION)

Battling food waste and offering a decent meal to those in need is something we love to contribute too. Reach out to your local Foodbank and request your guests to hand in products with long shelf lives as they leave.



- Battles food waste
- Improves margins
- Nice sustainability story
- Raising awareness
- Giving back to society

Please contact us for further info via [mail](#)

[More info Foodbank](#)

[More info TGTG](#)

Prices on request



STRAW BALE GARDEN

Gardening on straw has some advantages: you are independent of the substrate, because plants can grow independent from bad soils. Since the plants grow on the straw bales, weeds and soil-borne diseases have little chance. Bumblebees and wild bees, on the other hand, benefit from the straw, because they find a natural shelter.



- Strengthens Biodiversity
- Edutainment for our guests
- Nice sustainability story

[More info](#)

Material € 300

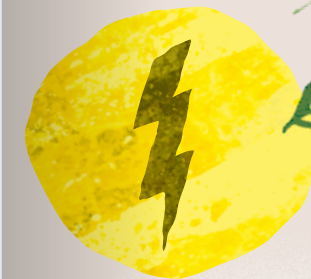
MORE INFORMATION?

www.landal.com/sustainabilitymenu
or mail to: sustainability@landal.com

Do you want to know more about sustainability? Then scan the QR Code to follow our E-Learning



SUSTAINABILITY MENU



STARTERS



INSECT HOTEL

With all their little holes and cracks, these hotels are the perfect place for ladybugs, spiders, bees and more. The hotel comes in different shapes and sizes. For a relatively low budget, you can offer a home to many different species. Moreover, these hotels can serve as input for the edutainment section.



- Natural enemies for mosquitos
- Nice sustainability story

More info

Depending on size:
From € 200 / piece



(RENT A) BEE HIVE

By leasing one or more bee colonies, you actively support your immediate environment and the entire ecosystem and you ensure more biodiversity. You can sell the honey afterwards. We suggest to work together with a beekeeper or use the possibility to rent bees.



- Strengthens biodiversity
- Edutainment for our guests
- Sell locally sourced honey to guests.

More info

Depending on country:
From € 140 / month



DEAD WOOD FENCE

Dead wood is one of the most vibrant habitats of our nature. Many insects, benefit from it, whether as food, hiding place or building material. These hedges are made of dead wood, which "work" as a fence or separation gives the park rustic farm garden charm and attracts many insects.



- Strengthens biodiversity
- Nice sustainability story
- Cost efficient
- Only requires leftover branches and some time

More info

€ 0



WILD FLOWERS

Flower up your park and make the bees happy! Make sure to use native wild flower seeds strengthen the biodiversity of your region. Consult your greenkeeper or seed supplier for a good mix that suits your park. See the digital copy for an elaborative list of regional seeds. For German parks please check the list for available regional seeds.



- Reduce mowing costs
- Attracts pollinators and birds
- Nice sustainability story

More info

Depending on country
From € 80



CHARGING STATIONS

The percentage of guests arriving with an electric car is increasing, therefore the demand for charging stations is very likely to increase as well. By collaborating with our utility partner, we enable each park to install charging points. Depending on current (or expected) charging volumes, different financial & ownership models can be selected, making sure the charging solution fits your park and guest.



- Revenue generator
- Hospitable to electric cars
- Positive effect on energy mix
- ROI ~ 3 years

Mail to department

(Two charging points per station)

~ € 2.500

SUSTAINABILITY EVENTS



Sustainability is a topic that has nested itself in civil society. Each year a wide range of activities is organized by even a larger variety of NGOs. We like to give you an overview of the main international activities so you can decide which activities to join.



- 27.03.2021 - Earth hour
- 20.05.2021 - World Bee Day
- 18.09.2021 - World Clean up day
- Events on the webpage

More info



OZON WATER

Cleaning with Ozone was first done in 1906. It offers a lot of advantages, it is a natural way of cleaning without chemicals, but eliminates bacterias and viruses (99%). You need only the machine, tapwater and electricity to implement it.



- Eliminates negative impact of chemical usage
- Cost savings
- Less waste (packaging, deliveries)

More info

From €1.400



WASTE BINS

Separating waste reduces the percentage of rest waste, also reducing costs. The bin is vertical making it easier to accommodate in bungalows. They are available with two and three bins. Moreover, the bin is made of recycled plastic. There is also a special Binbang basket designed for organic waste separation. This is an example of a waste bin (depending on the countries).



- Reduces % of rest waste
- Improves NPS
- Nice sustainability story

More info

2-Bin € 95

Basket (organic waste) € 8,75

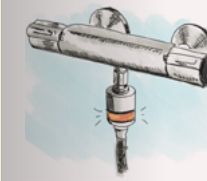
HOW TO INFORM YOUR GUESTS (PARK COMMUNICATION)

Sustainability is something we do together with our guests. To inform our guests about and invite them to our journey, guest communication is available for most of the meals on the menu. Please contact the Sustainability team for more information.

Sustainability@landal.com

Please note that all displayed prices are educated estimates. No rights can be derived from any of the price quotes or claims mentioned on this menu.

MAINS



ECOSAVER

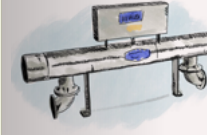
The EcoSaver is an add-on to existing showering hardware. The signals are color based on the duration of the current shower session. At start, the EcoSaver indicates a green color but gradually turns red. No negative NPS effects were detected.



- Reduced shower times (up to 19%) and thus water and gas consumption;
- Reduced CO₂ emissions;
- ROI 1,5 to 2 y (based on pilot)

More info

€ 22 / piece



UV FILTERS FOR THE SWIMMING POOL

An ultraviolet (UV) pool system uses the power of UV light clean the pool water, lowering the chemical content in your pool and eliminating chlorine by-products. Using this makes your pool safer and easier to maintain. It also reduces the amount of fresh water needed. The UV filter has been installed at various Landal pools.



- Reduce water and chlorine use
- Improves the quality of the water
- Natural way of cleaning water
- ROI ~ 2-4 years

More info

€ 17.500



Business case template available

BIODIGESTER50

The biodigester takes swill waste and transforms it into BioGas. This can be used to cook or heat. Approximately each 3-4 kilos of swill is digested into 1 Nm³ (capacity of 50 kg a day). Moreover, the biodigester generates plant fertilizer which can be used at the park or sold to guests and it offers educational guest content.



- Reduce gas, landscape & waste bills
- Sell digestate to guests
- Nice sustainability story
- ROI ~ 5-8 years

€ 42.500



SOLAR ENERGY

Capturing the energy of the sun come in two main flavors, solar PV (generating electricity) and solar thermal (generating heat). Both options have different infrastructural and investment implications. With our strategic partner Vattenfall, we can help your park to investigate, finance and install Solar PV or Solar Thermal power solutions.



- Reduce dependency on gas
- Electrify & sustainalize your park
- ROI ~ 7,8 years

Mail to department

Prices on request



FRUIT GARDEN

By dedicating a small area of the park for a fruit garden one can arrange seasonal activities in which guests can discover what green can do. For example: bees in action, picking up fruit with children or cooking activities. The fruit forest will tell an educational story about the importance of biodiversity and the role of bees.



- Edutainment for our guests
- Improves biodiversity

Mail to department

20 fruit Trees, Bee flower mix, Trail & signs

In total € 7.800